



RESIDENCE

Flat 20, 21, Castle Court Blantyre Road, , G71 8PD

[www.residencestateagents.co.uk](http://www.residencestateagents.co.uk)



Viewing by appointment with Residence Uddingston

T: 01698 444222 | E: [uddingston@residencestateagents.co.uk](mailto:uddingston@residencestateagents.co.uk) | A: 61-63 Main Street, Uddingston, G71 7EP



RESIDENCE





## 1 Bedrooms | 1 Public Room | 1 Bathroom

This bright and well-proportioned ground floor retirement apartment is set within the popular Castle Court development, surrounded by beautifully maintained communal gardens and conveniently placed for the amenities of both Bothwell and Uddingston.

Built by McCarthy & Stone circa 2003, this purpose-built retirement development offers comfortable and secure living, with a residents' lounge, laundry room, visiting guest suite, duty manager service, lift and stair access to all floors, secure entry system, electric heating and double glazing.

The apartment is neutrally decorated throughout and finished with a mixture of carpeted and vinyl flooring. The accommodation comprises a welcoming reception hallway, spacious lounge with dining area and direct access to the communal garden area, fitted kitchen with integrated oven and hob, double bedroom with fitted storage, and a shower room.

Externally, the communal gardens are well maintained and established, with lawns, planted borders, shrubs and seating areas. There is also residents' parking and external lighting.

Castle Court enjoys a superb setting with a good degree of privacy, while remaining close to Bothwell's highly regarded Main Street, where a range of everyday shops, restaurants, bistros and pubs can be found. Uddingston and Hamilton offer further amenities and transport links, including regular bus and train services to Glasgow, Edinburgh and surrounding towns. The M74 motorway is also easily accessible, providing excellent links across the central belt. Local leisure facilities include golf courses, gyms, swimming pools and nearby country parks with scenic walking routes.



527.44 sq ft | EER = C

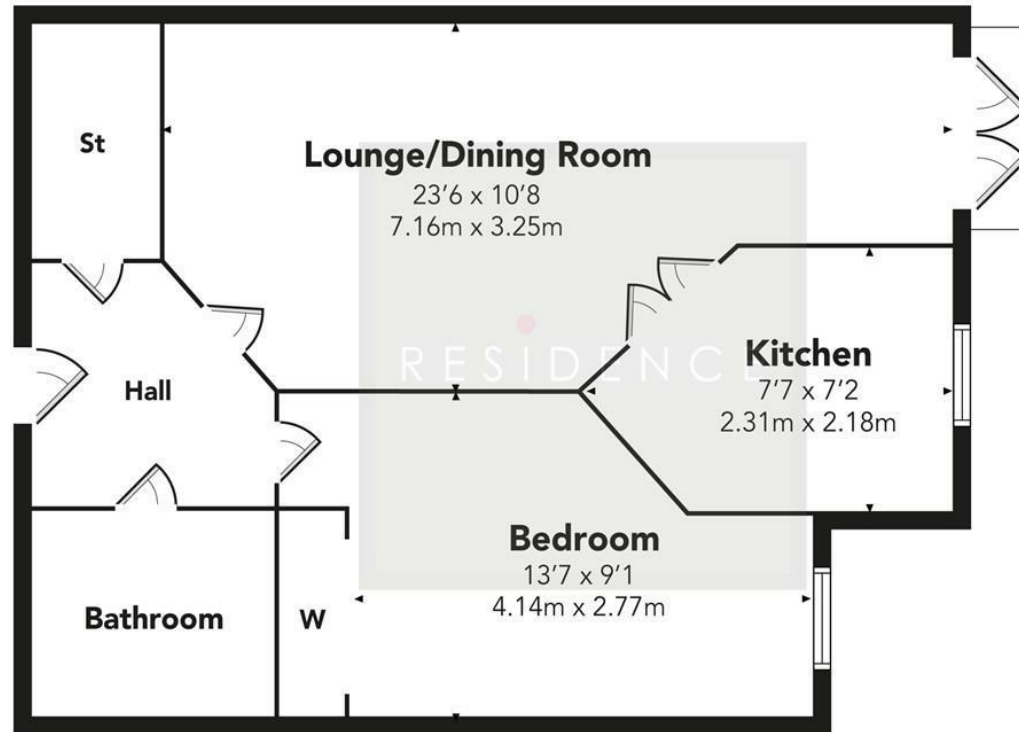


RESIDENCE





## Castle Court



Floor Plan measurements are approximate and are for illustrative purposes only. While we do not doubt the floor plans accuracy, we make no guarantee, warranty or representation as to the accuracy and completeness of the floor plan. You or your advisors should conduct a careful, independent investigation of the property to determine to your satisfaction as to the suitability of the property for your space requirements.

Produced by Plush Plans Ltd

We believe these details to be accurate; however, they do not form any part of a contract. Fixtures and fittings are not included unless specified in the enclosed. Photographs are for general information and it must not be inferred that any item is included for sale with the property. All distances and measurements are approximate. Floorplans may not be to scale and are for illustration purposes only.